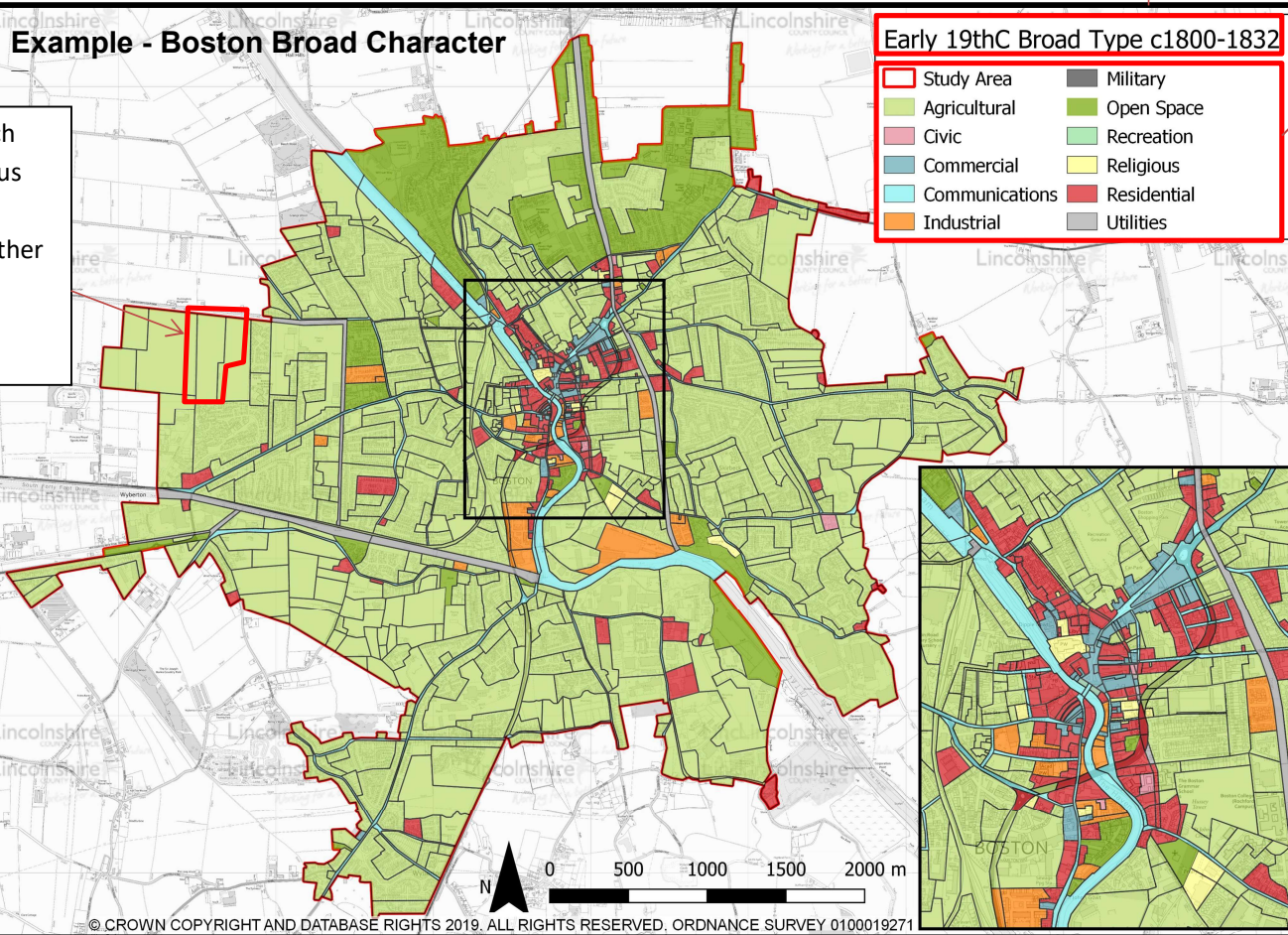


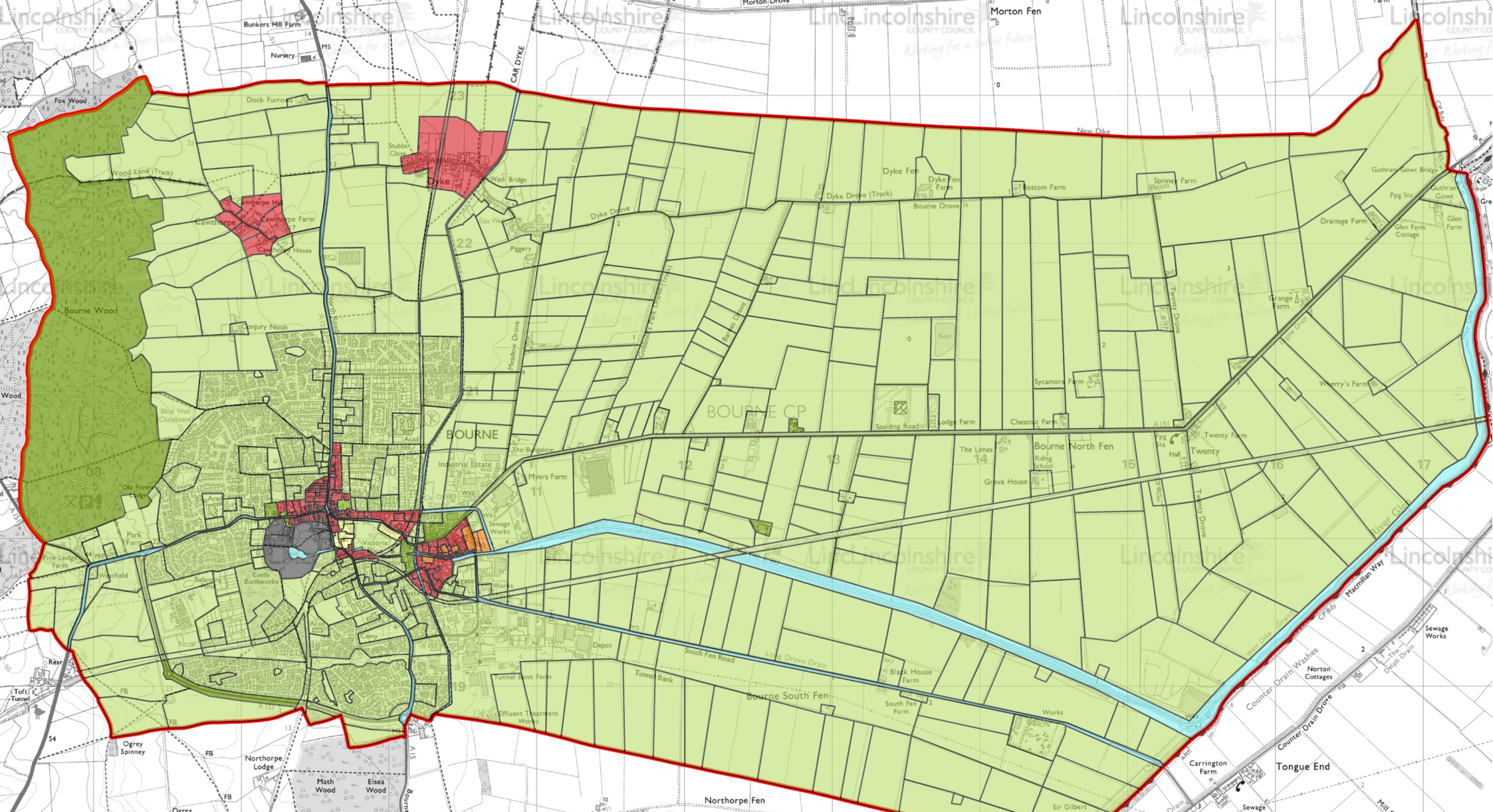
How to use the Historic Urban Character Types Map

The key displays the character of a town at a moment in time; this map shows the character of Boston in the early 19th century.



Individual building block; which record the current and previous character and land use of a particular area or space. Together the HUCTs can reveal growth, development patterns and recurrent land use.

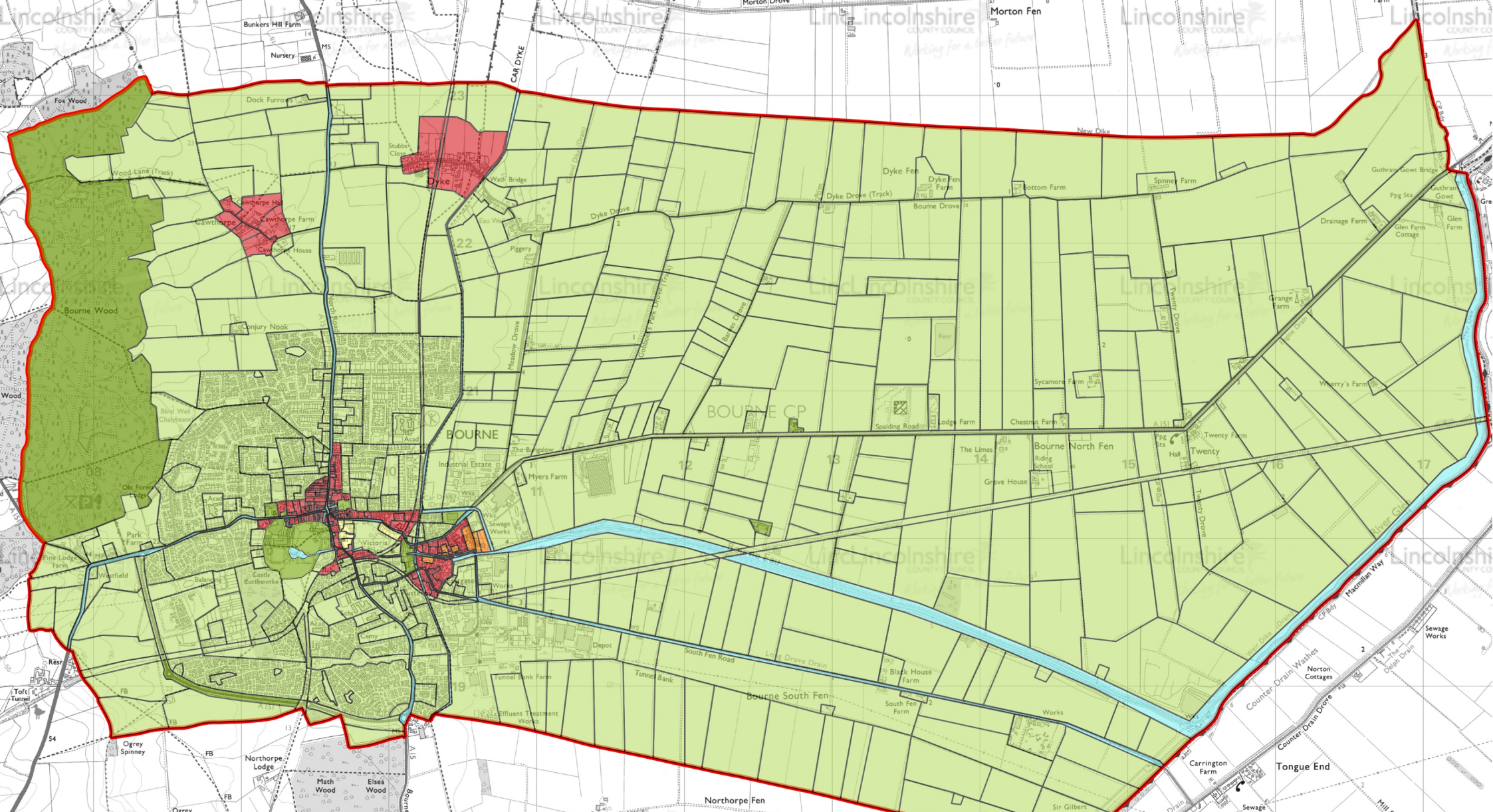
The Broad Type shows the general character of a town. You can see here that Boston is built up of almost 1000 character blocks. These demonstrate how a town has morphed and grown over an extended period of time.



Medieval Broad Type c1066-1539

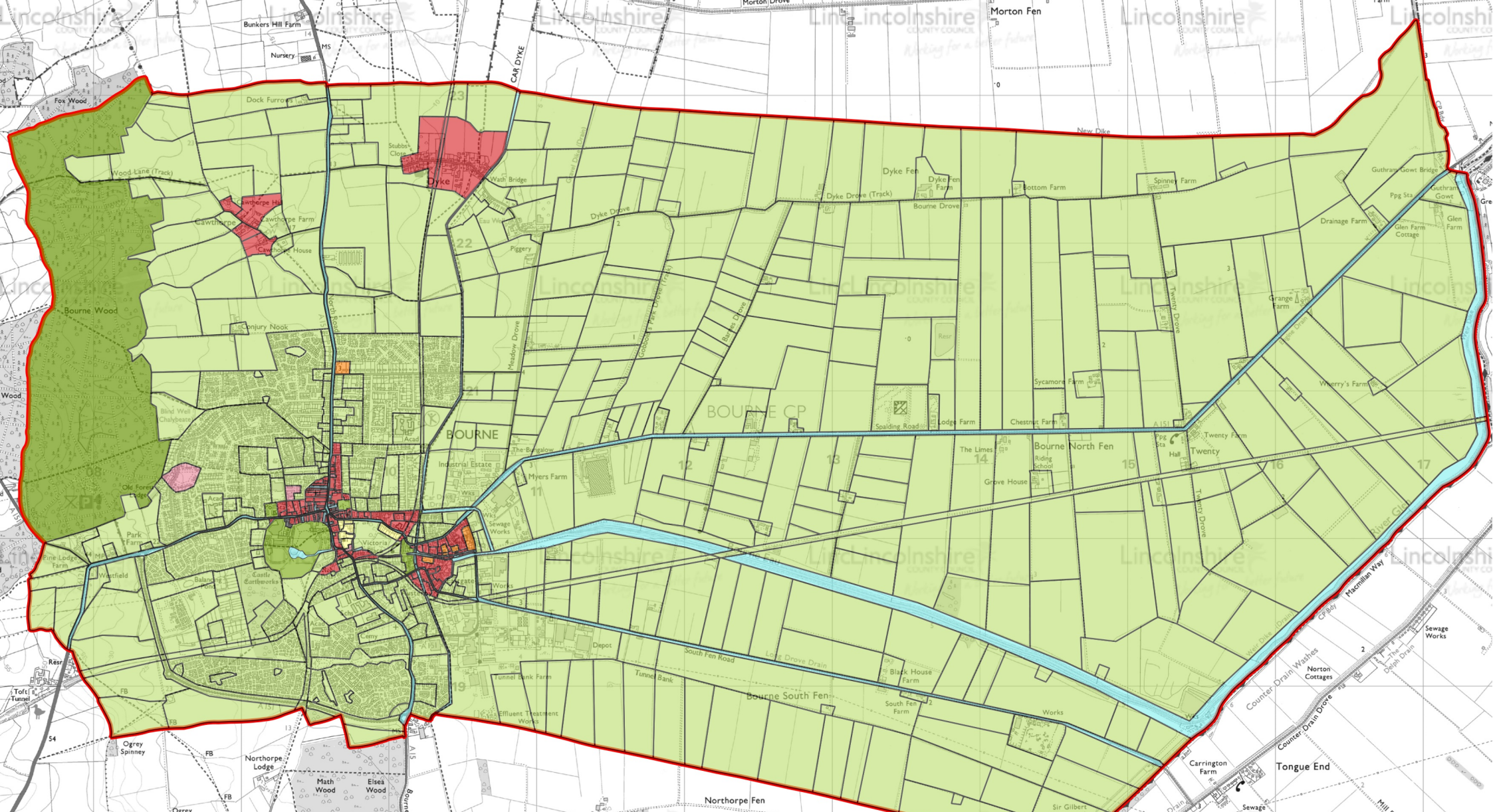
- | | | |
|--|--|--|
| Agricultural | Industrial | Religious |
| Civic | Military | Residential |
| Commercial | Open Space | Utilities |
| Communications | Recreation | Survey boundary |





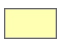











Post-medieval Broad Type c1540-1759

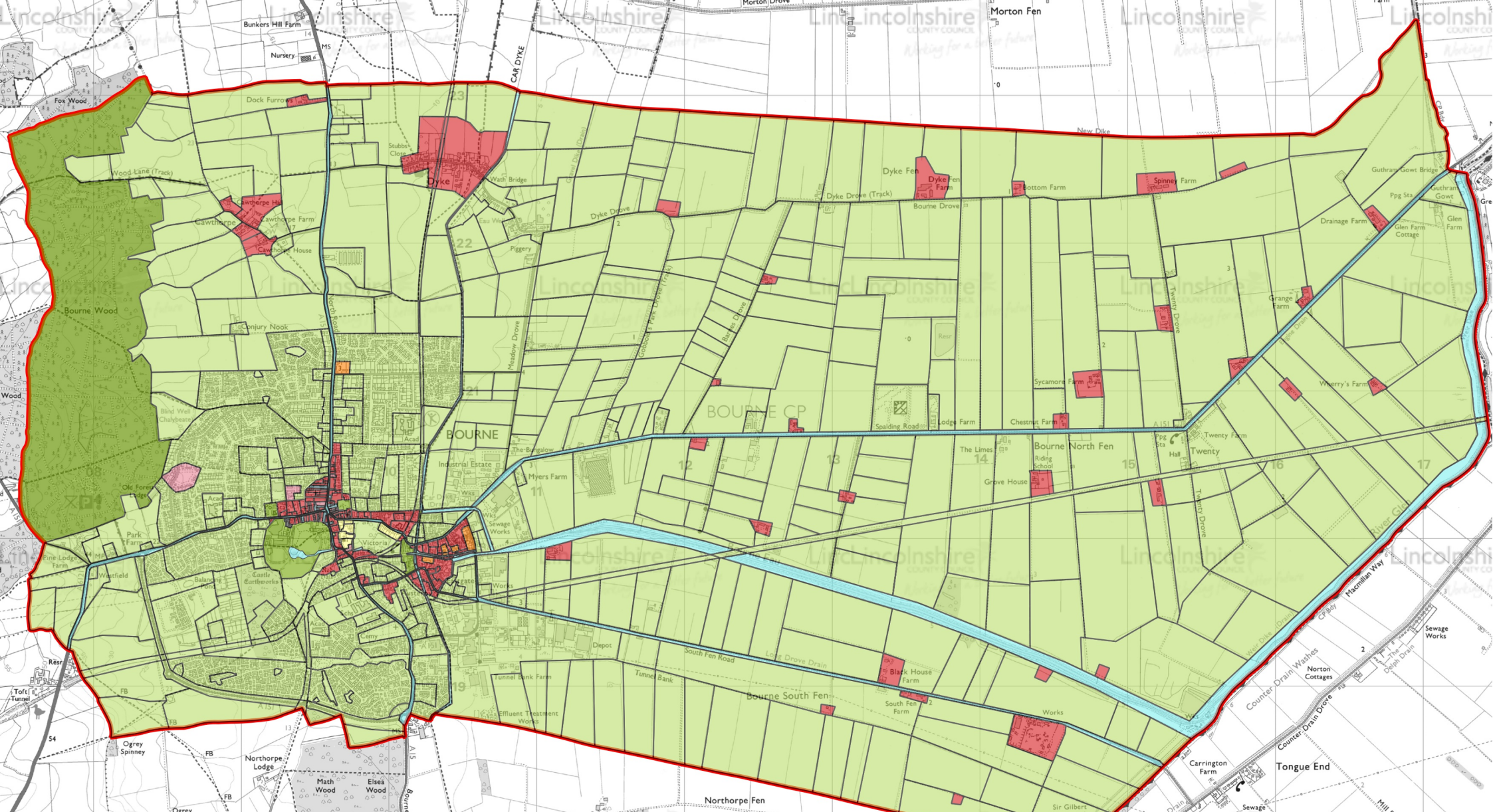
- | | | |
|----------------|------------|-----------------|
| Agricultural | Industrial | Religious |
| Civic | Military | Residential |
| Commercial | Open Space | Utilities |
| Communications | Recreation | Survey boundary |



Late 18thC Broad Type c1760-1799

- | | | |
|---|--|---|
|  Agricultural |  Industrial |  Religious |
|  Civic |  Military |  Residential |
|  Commercial |  Open Space |  Utilities |
|  Communications |  Recreation |  Survey boundary |

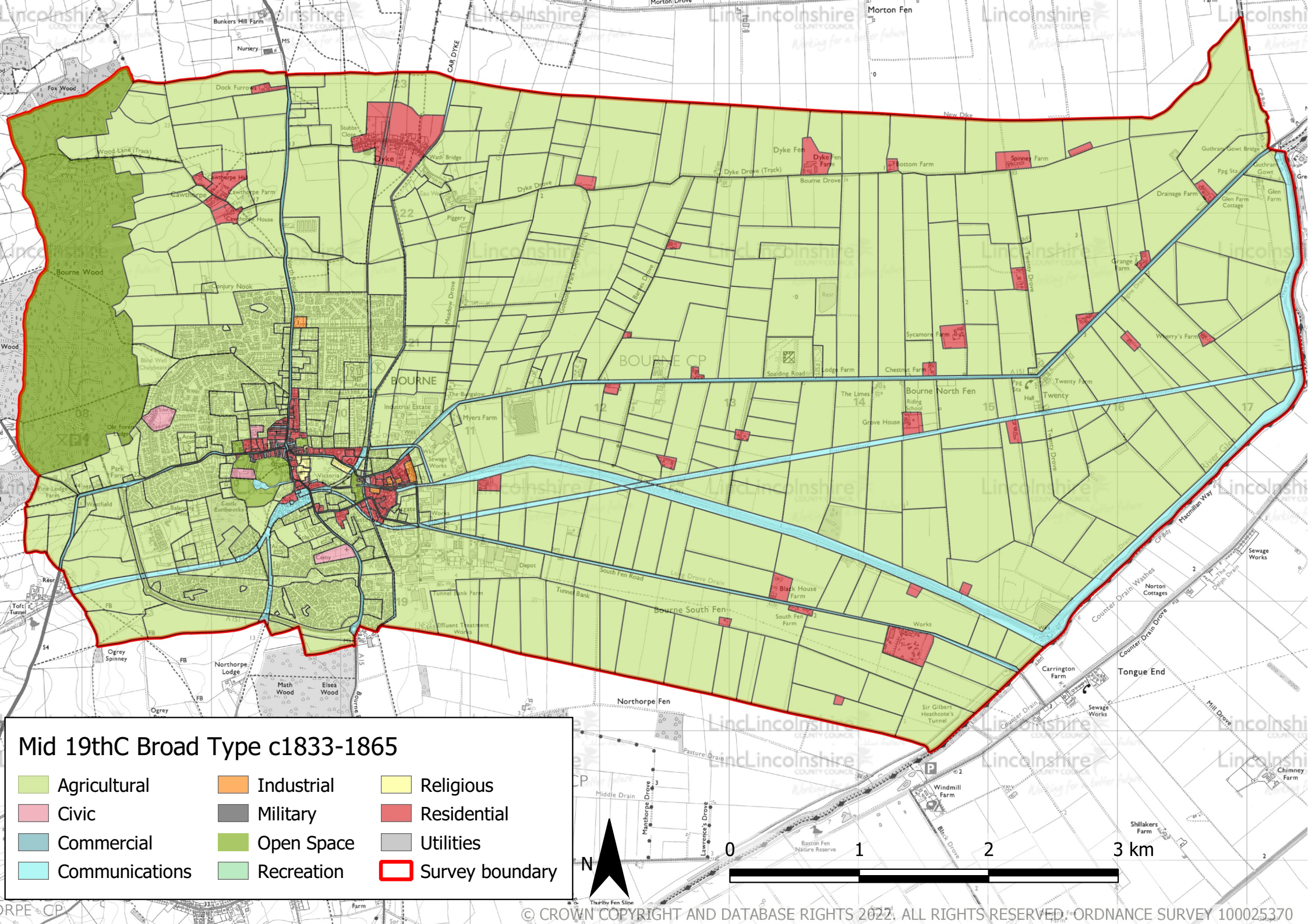
















Early 19thC Broad Type c1800-1832

- | | | |
|----------------|------------|-----------------|
| Agricultural | Industrial | Religious |
| Civic | Military | Residential |
| Commercial | Open Space | Utilities |
| Communications | Recreation | Survey boundary |

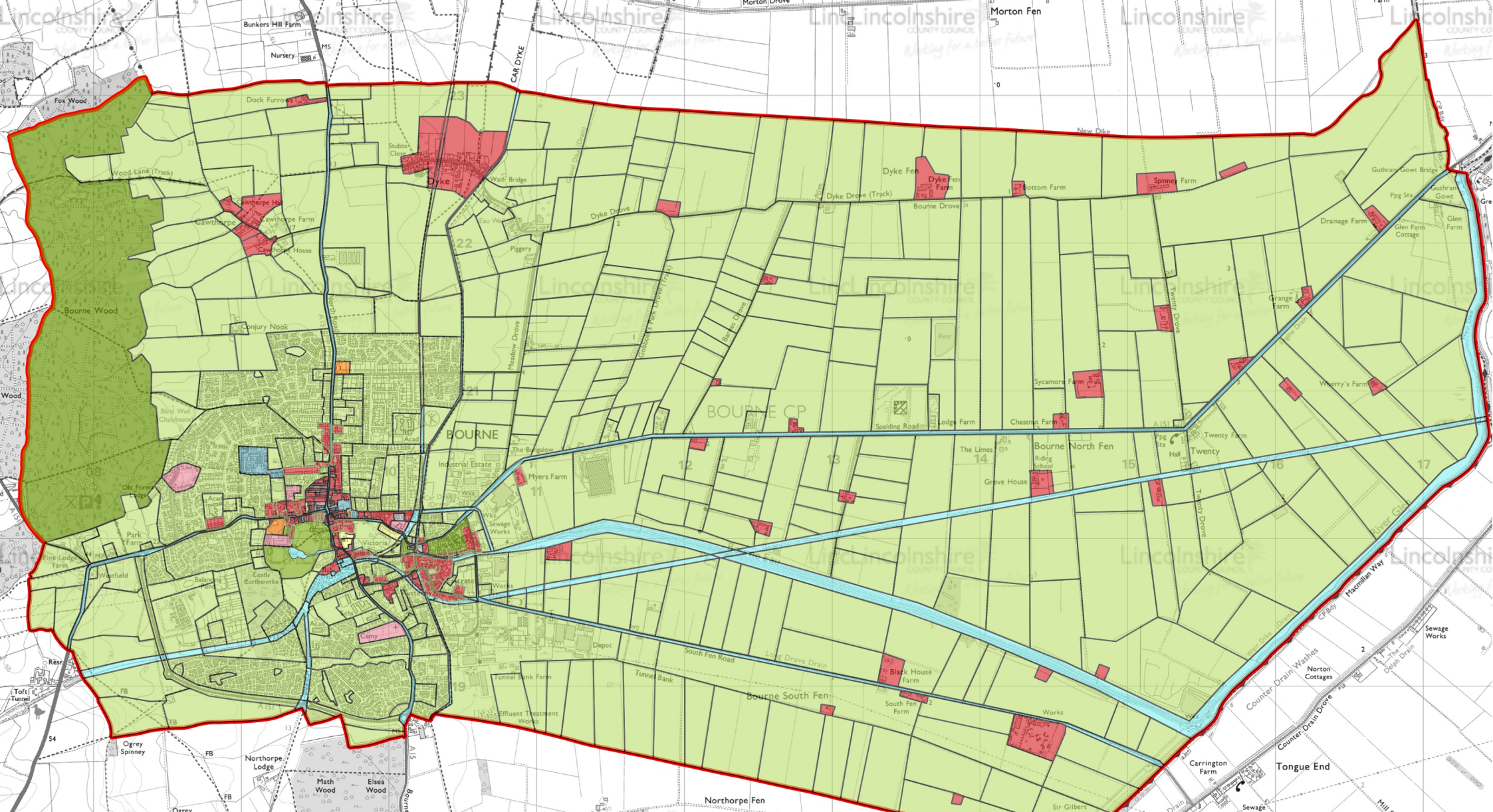




Mid 19thC Broad Type c1833-1865

- | | | |
|---|--|---|
|  Agricultural |  Industrial |  Religious |
|  Civic |  Military |  Residential |
|  Commercial |  Open Space |  Utilities |
|  Communications |  Recreation |  Survey boundary |

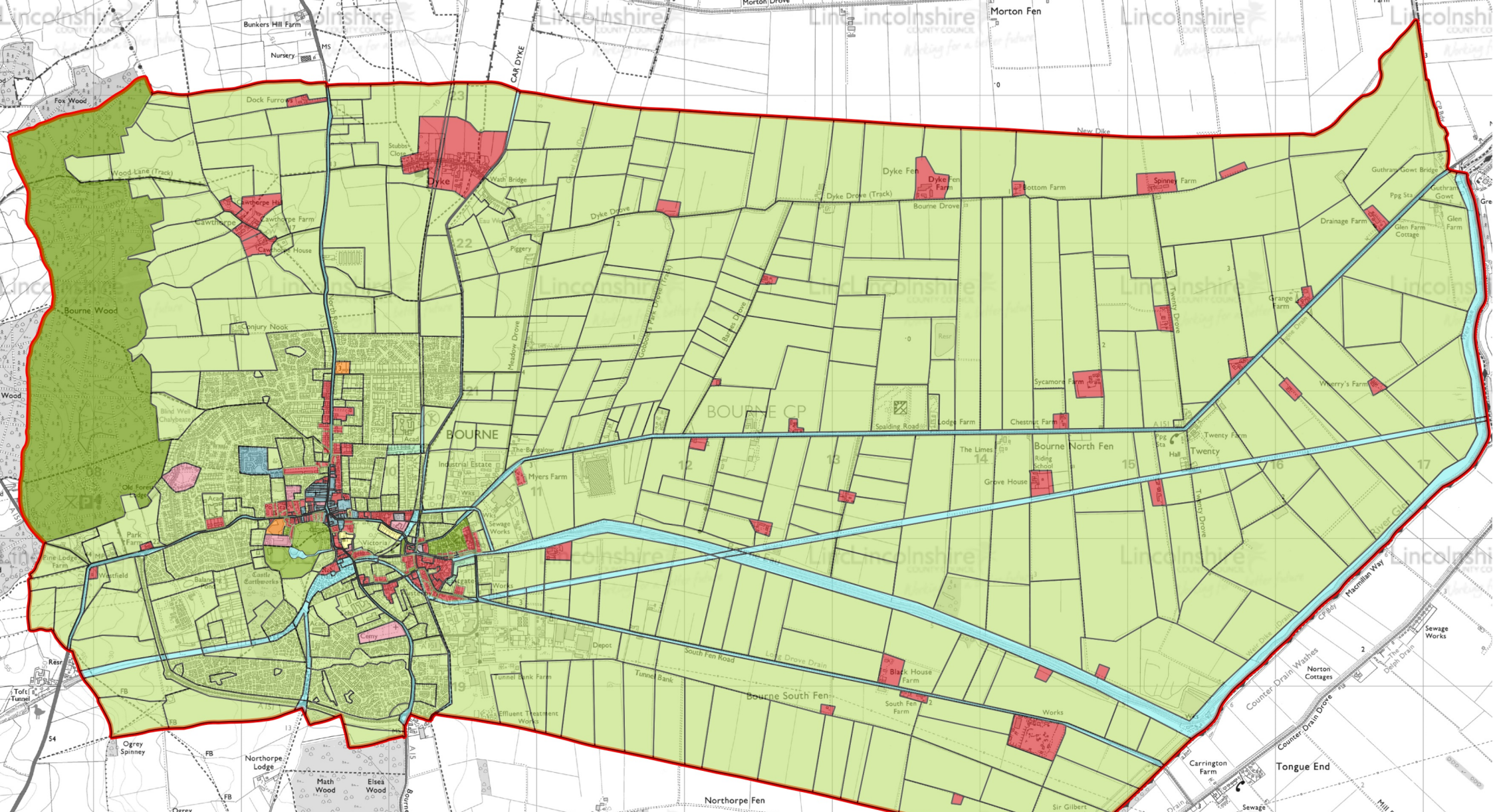




Late 19thC Broad Type c1866-1899

- | | | |
|----------------|------------|-----------------|
| Agricultural | Industrial | Religious |
| Civic | Military | Residential |
| Commercial | Open Space | Utilities |
| Communications | Recreation | Survey boundary |

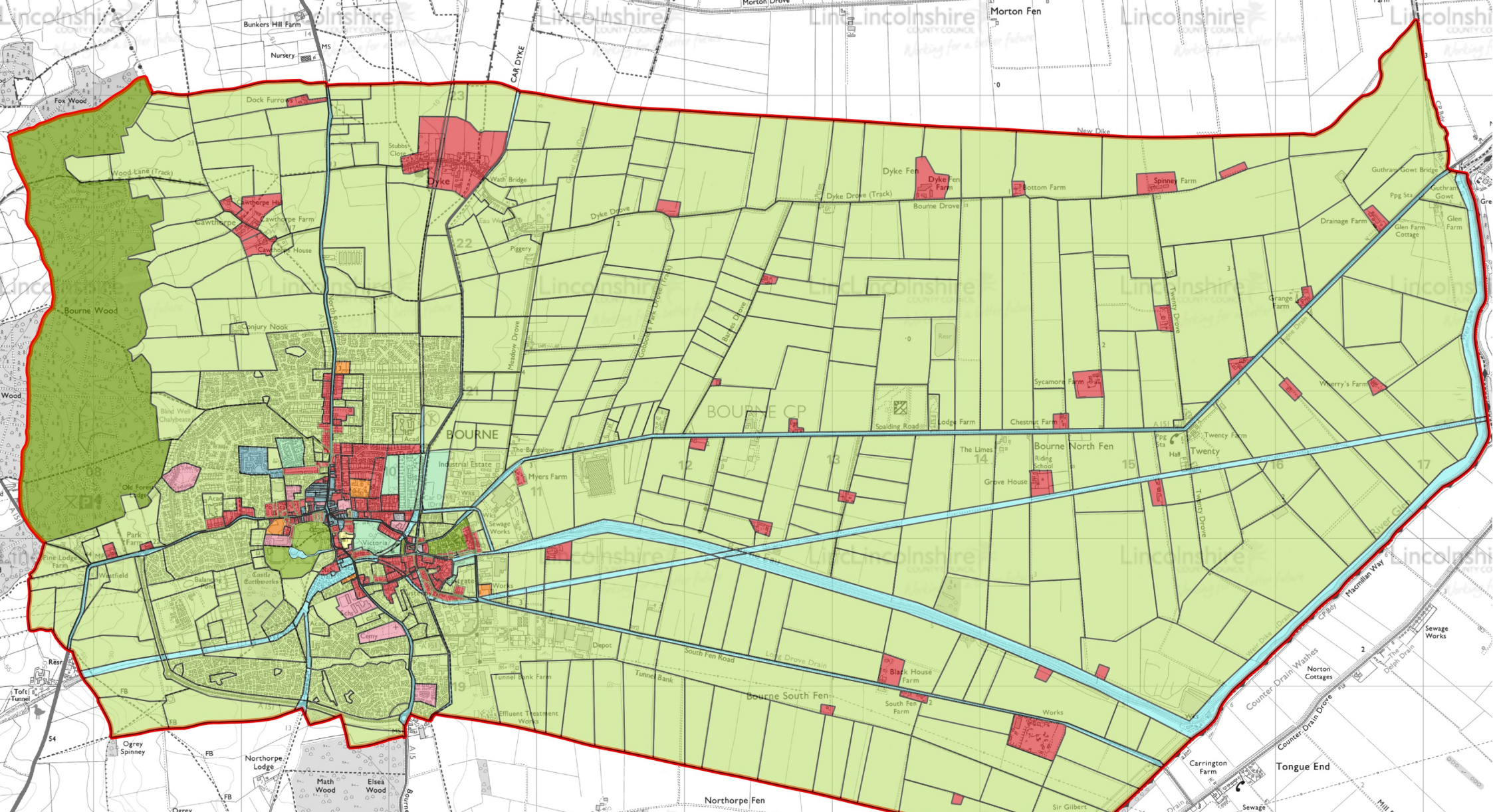




Early 20thC Broad Type c1900-1924

- | | | |
|----------------|------------|-----------------|
| Agricultural | Industrial | Religious |
| Civic | Military | Residential |
| Commercial | Open Space | Utilities |
| Communications | Recreation | Survey boundary |

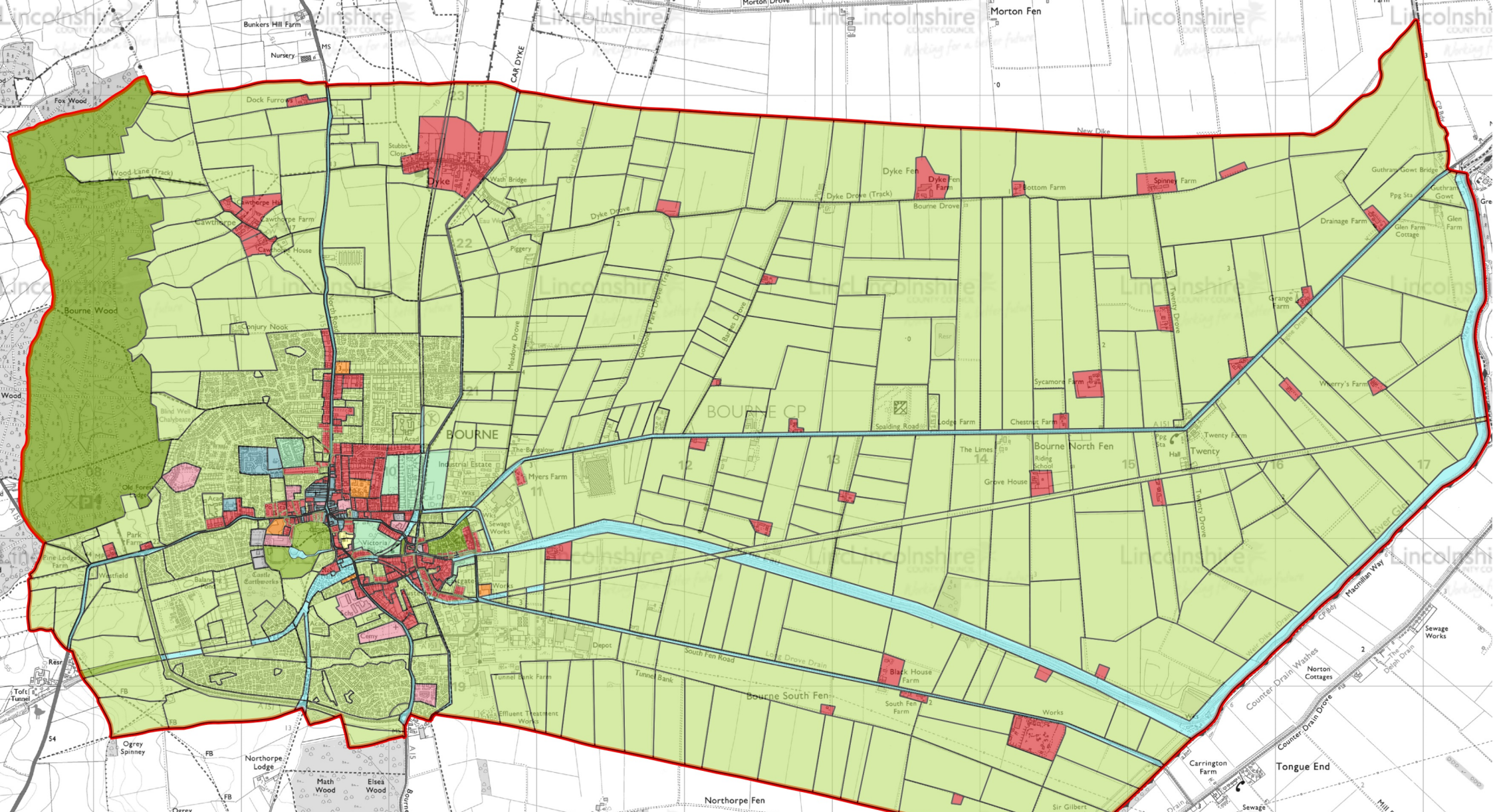




Early-mid 20thC Broad Type c1925-1949

- | | | |
|----------------|------------|-----------------|
| Agricultural | Industrial | Religious |
| Civic | Military | Residential |
| Commercial | Open Space | Utilities |
| Communications | Recreation | Survey boundary |

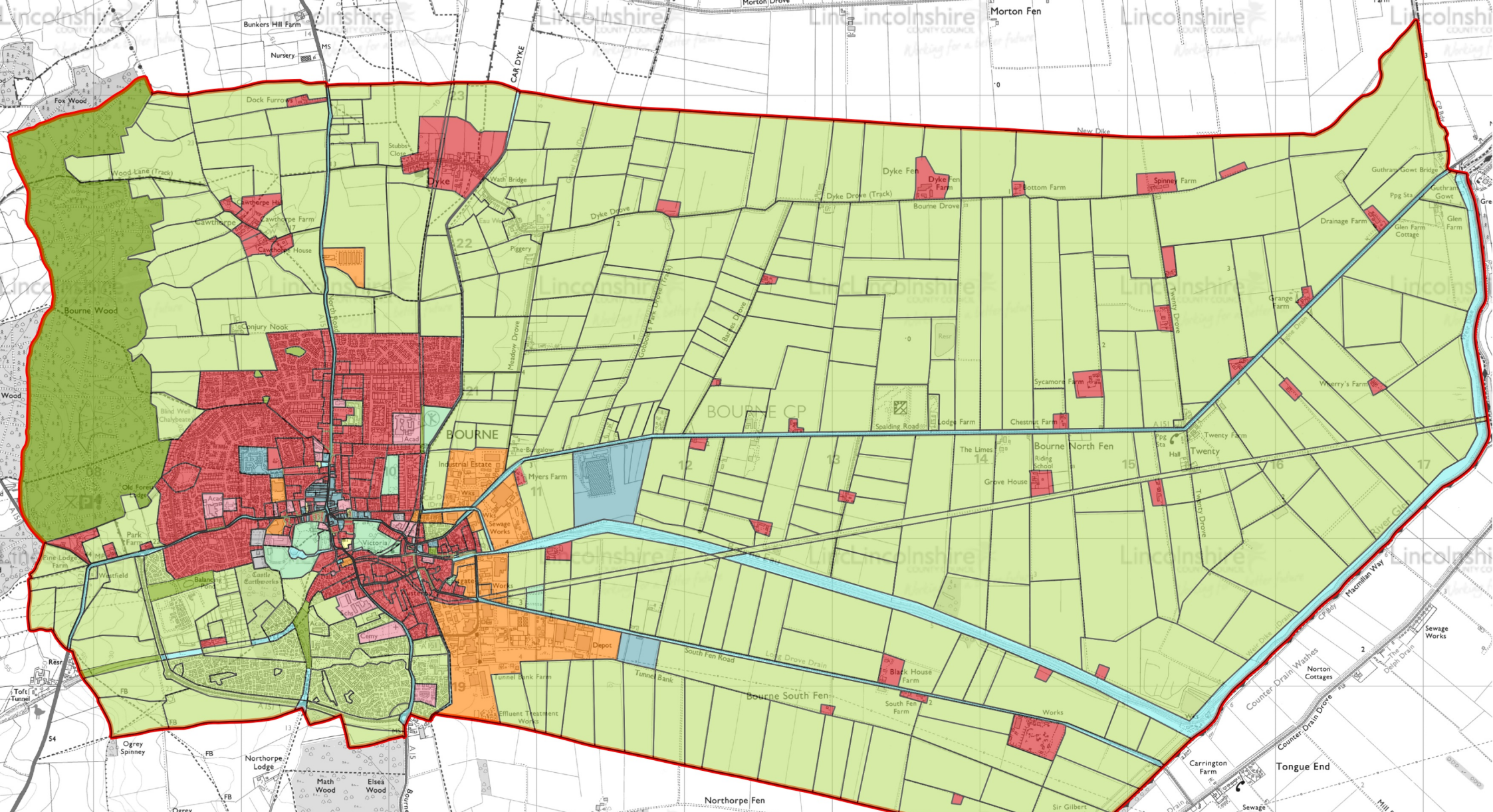




Mid-late 20thC Broad Type c1950-1974

- | | | |
|----------------|------------|-----------------|
| Agricultural | Industrial | Religious |
| Civic | Military | Residential |
| Commercial | Open Space | Utilities |
| Communications | Recreation | Survey boundary |

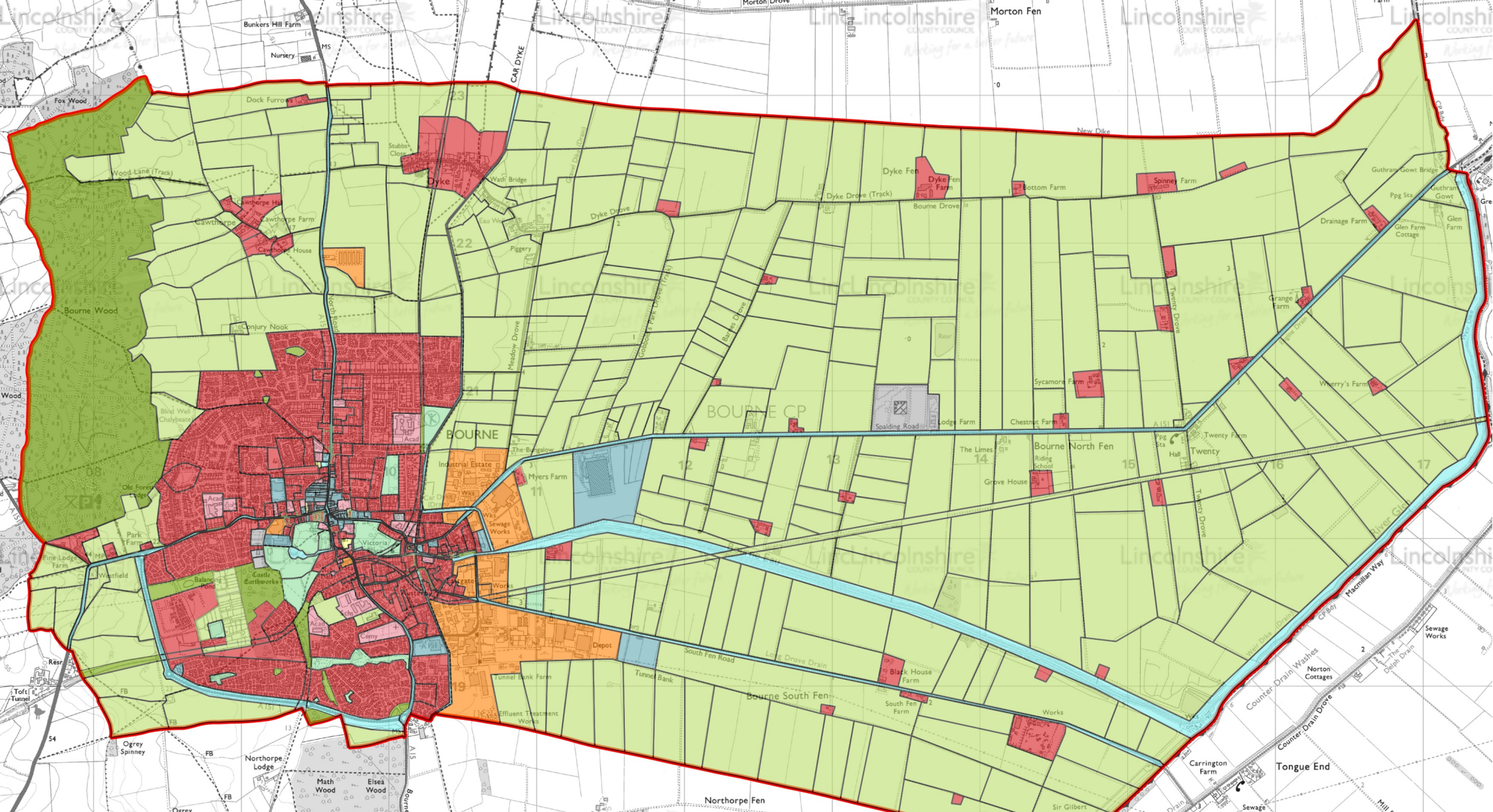




Late 20thC Broad Type c1975-1999

- | | | |
|----------------|------------|-----------------|
| Agricultural | Industrial | Religious |
| Civic | Military | Residential |
| Commercial | Open Space | Utilities |
| Communications | Recreation | Survey boundary |





21stC Broad Type c2000-2021

- | | | |
|----------------|------------|-----------------|
| Agricultural | Industrial | Religious |
| Civic | Military | Residential |
| Commercial | Open Space | Utilities |
| Communications | Recreation | Survey boundary |

